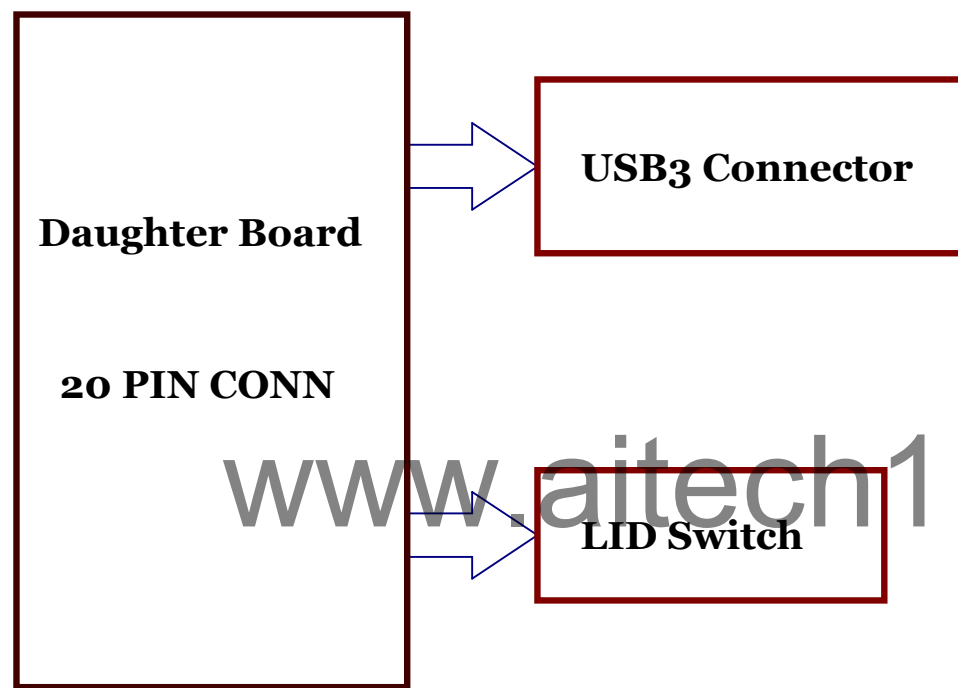


NL6D Block Diagram -- Daughter Board

01



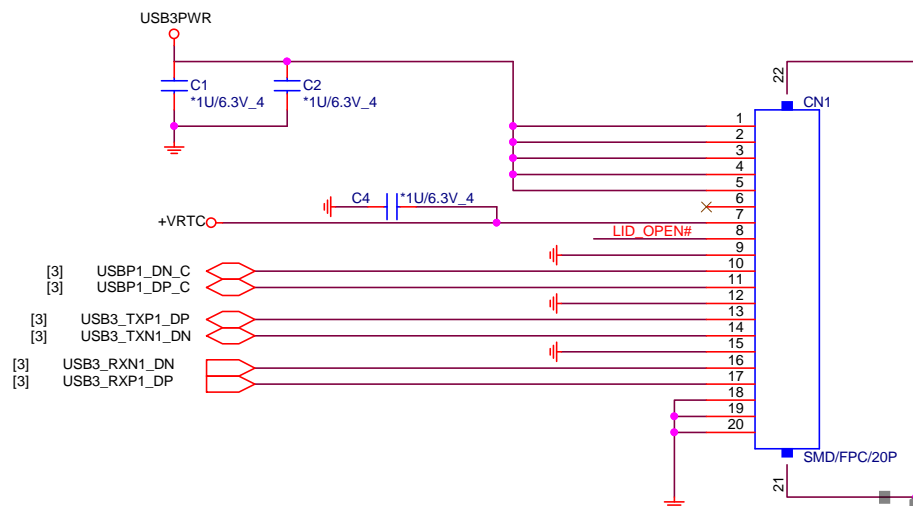
Quanta Computer Inc.

PROJECT : NL6D

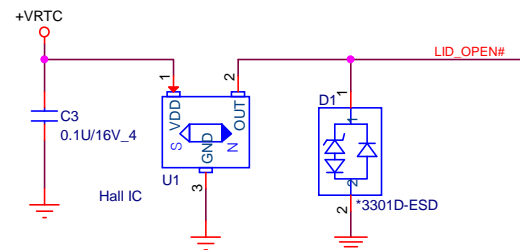
Size	Document Number	Rev 1A
USB Board Block Diagram		

Date: Tuesday, April 12, 2016 Sheet 1 of 4

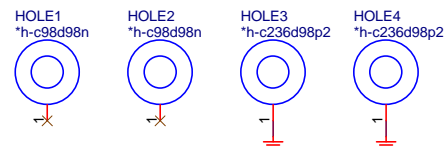
DB CONNECTOR

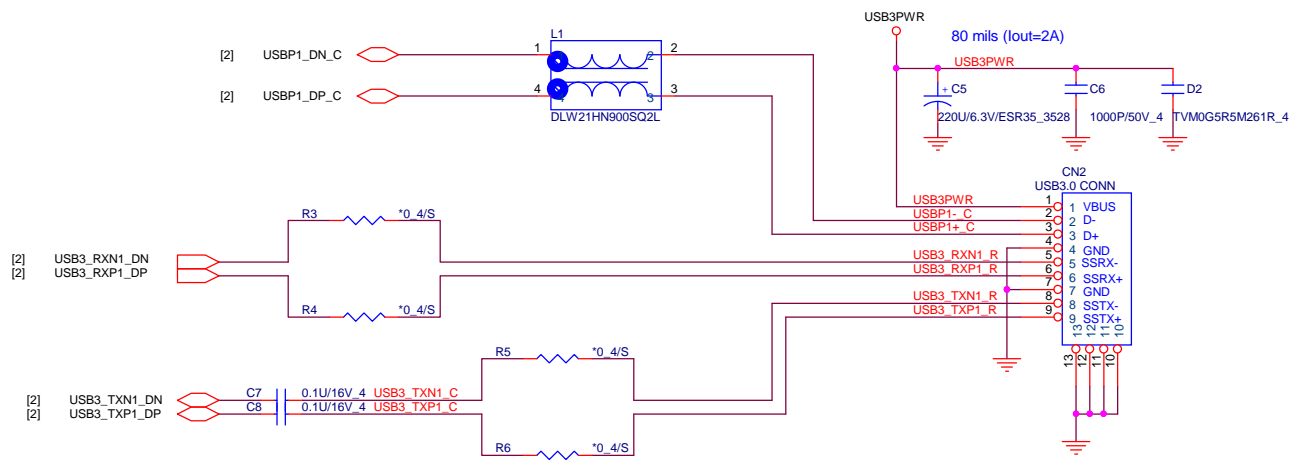


LID Switch

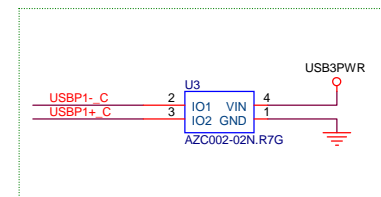
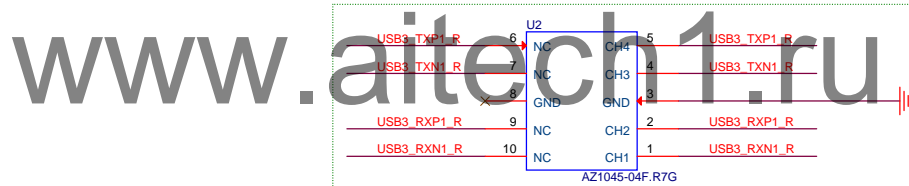


www.aitech1.ru





EC-SIT-01



EC-DV-01

EC-SIV-01



Quanta Computer Inc.

PROJECT : NL6D

Size Document Number
USB3 CN

Date: Tuesday, April 12, 2016


Sheet 3 of 4

Rev
1A

NL6C USB Board Schematic EC List 2015/9/4

EC#	Page	Description
EC-DV-1	3	Staff U2, RV1, and RV2 for ESD requirement.
EC-SIV-1	3	Delete C9, RV1, RV2, and add U3, and change U2 package for ESD requirement.
EC-SIT-1	3	Delete L2,L3,R1,R2, and R3,R4,R5,R6 change from 0 ohm to shortpad.

www.aitech1.ru

		Quanta Computer Inc.	
		PROJECT : NL6D	
Size	Document Number	Rev	
	EC list	1A	
Date:	Tuesday, April 12, 2016	Sheet	4 of 4